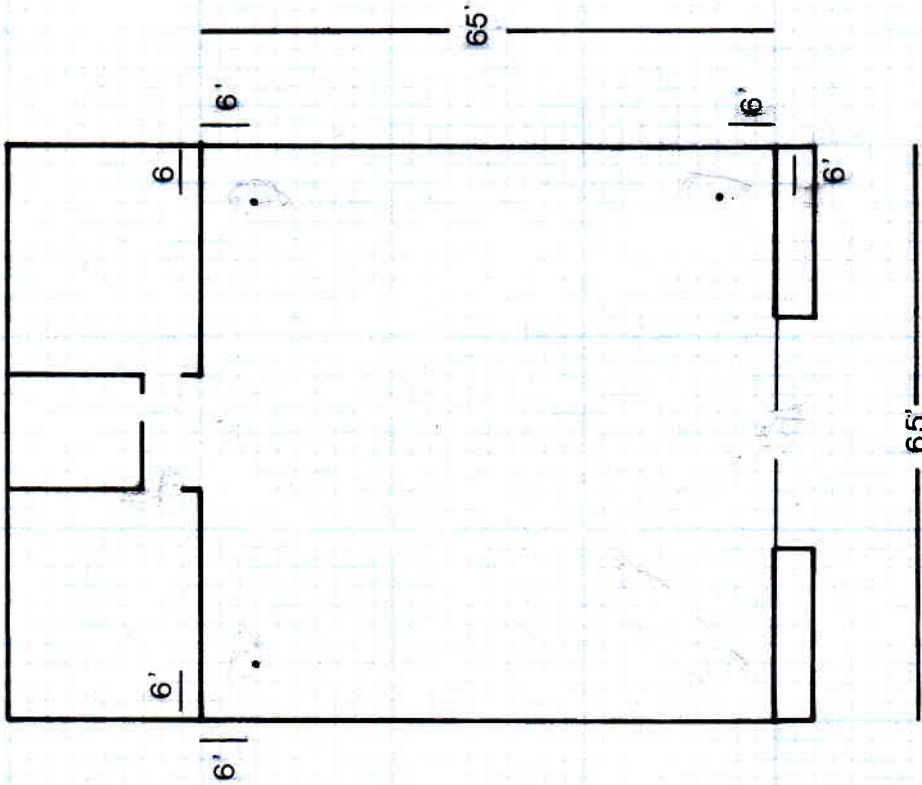


Art Gallery

**University of Maryland
Baltimore County**

February 28 - March 5, 1983

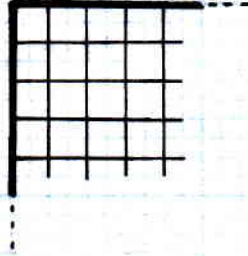
**5401 Wilkins Ave
Baltimore, Maryland**



• = speaker (3 1/2" x 2 3/4" x 2 3/4")



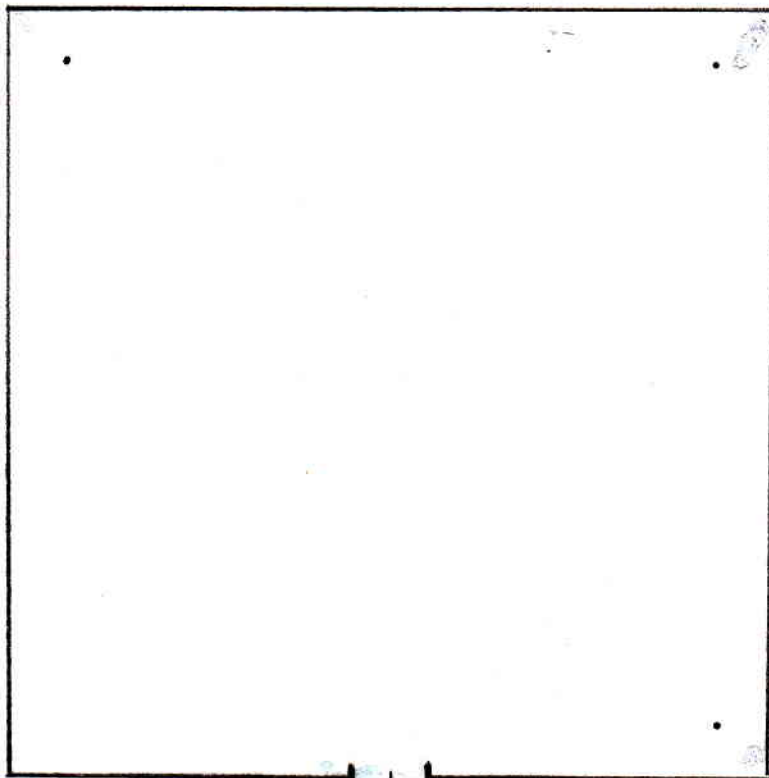
grid of track
lights 4' below
ceiling



UMBC GALLERY

speaker
1

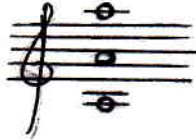
speaker
2



speaker
3

Miniature speakers (3"x3"x3½") attached to light tracks above audience, out of sight. All wires hidden from view. Sound equipment locked in a closet. All sounds stand unchanged within the room; ppppp, square waves filtered almost to sine tones.

speaker 1



speaker 2



speaker 3

