

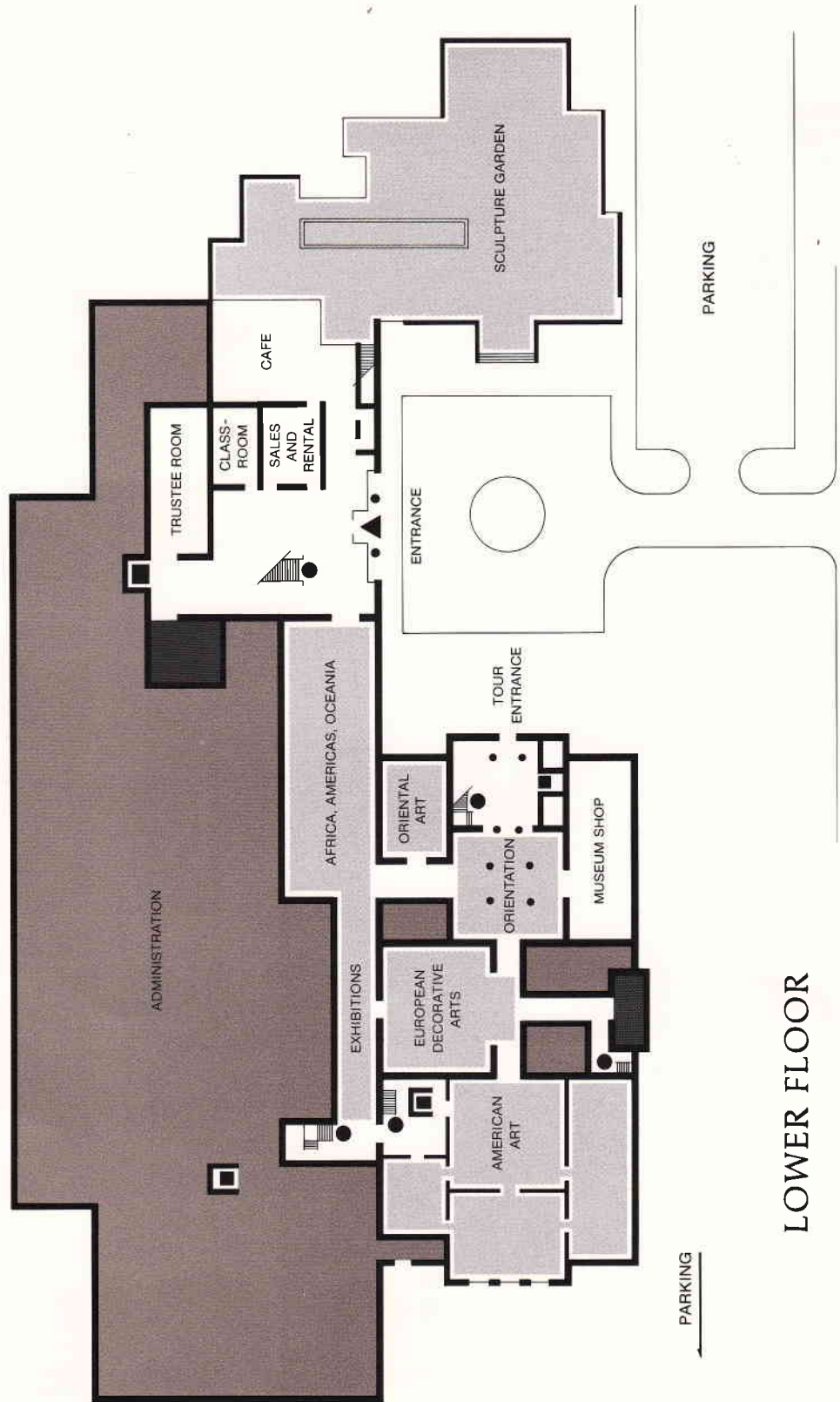
untitled
(installation)

Thomas DeLio

The Baltimore Museum of Art
Baltimore, Md.

October 27-28, 1984

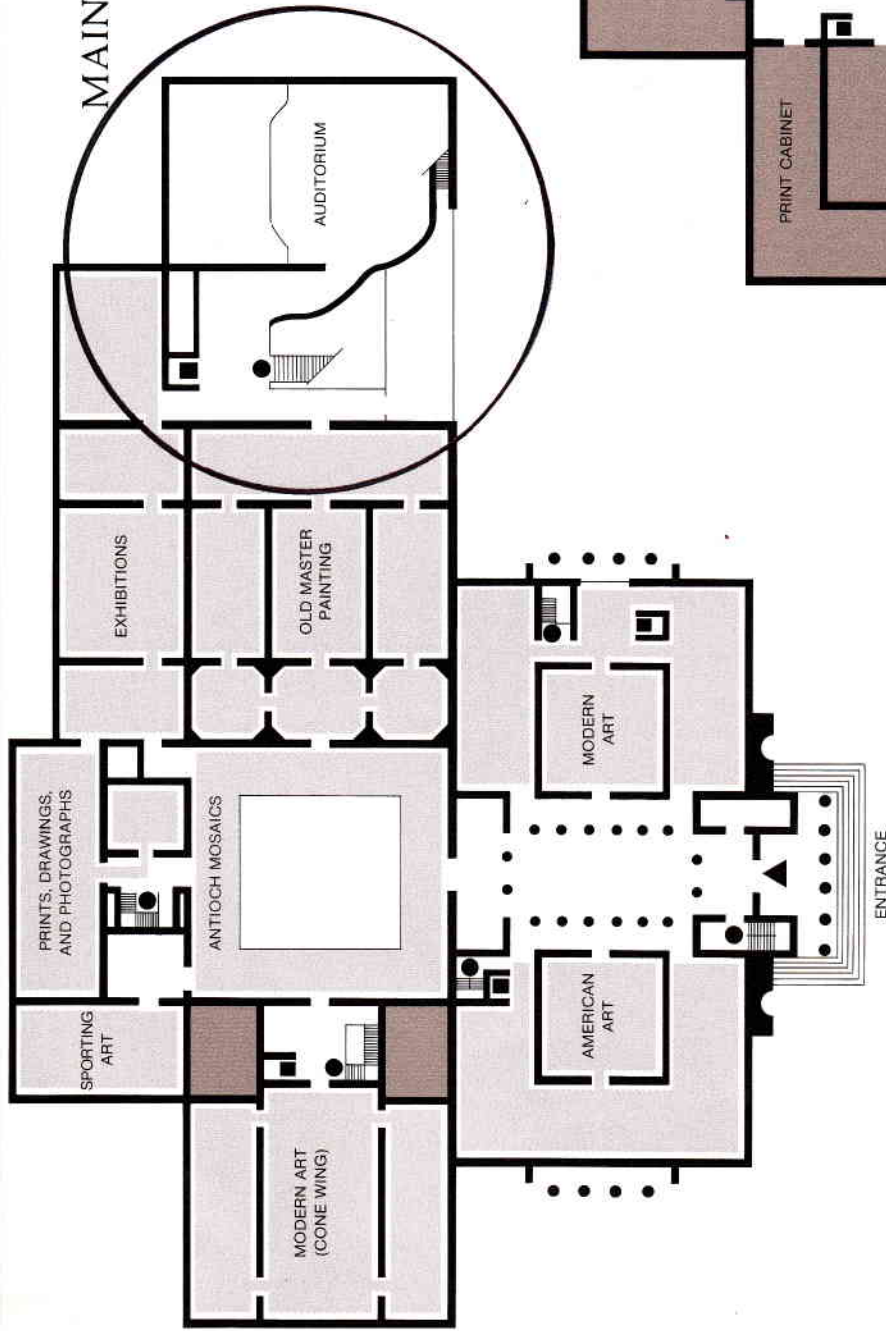
THE BALTIMORE MUSEUM OF ART



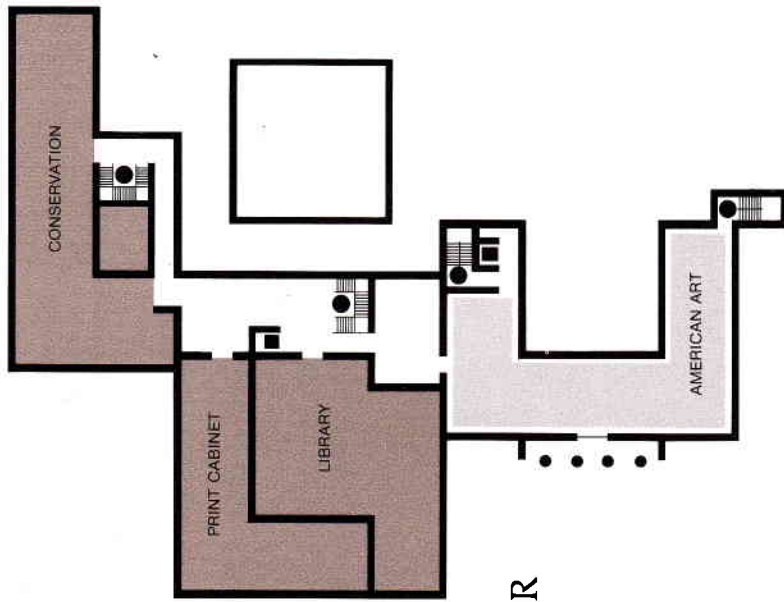
LOWER FLOOR

ART MUSEUM DRIVE

MAIN FLOOR

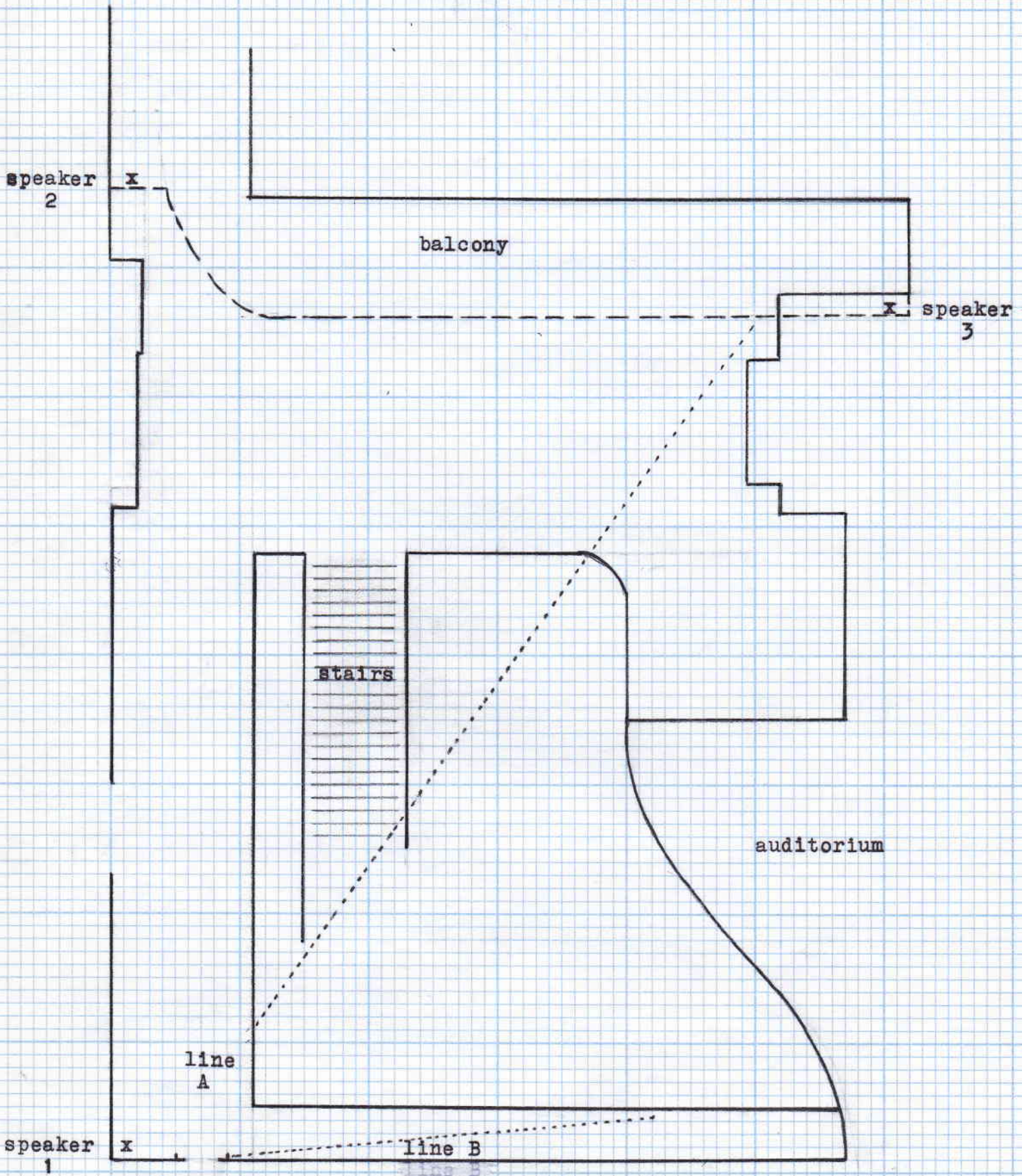


UPPER FLOOR



- Galleries
- Administration
- Rest Rooms
- Entrance
- Stairs
- Elevators

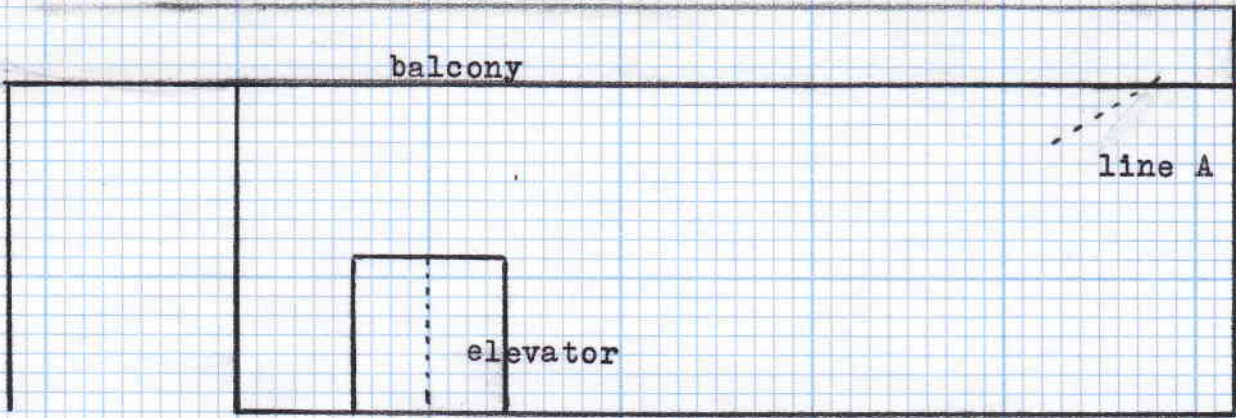
Baltimore Museum of Art
Main Floor, New Wing



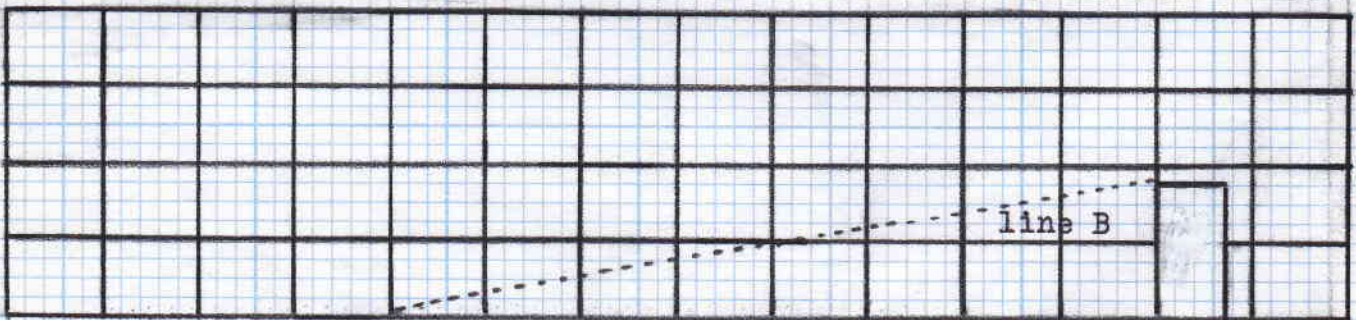
□ = ca. 1'

x = speaker
..... = monofilament

60



rear wall



front wall

door

I = 1"

60
14

I) Visuals

Two pieces of very thin, barely visible, monofilament were stretched taught and tied to the pillars and railings located within the space.

line A - extended from floor to balcony

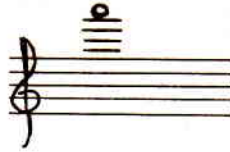
line B - extended from floor to top of doorway

II) Sounds

Miniature speakers (3"x3"x3 $\frac{1}{2}$ ") were placed unobtrusively throughout the space (in corners; behind pillars). All wires and sound equipment were hidden from view. All sounds remained unchanged throughout the duration of the installation.

The sounds employed consisted of square waves filtered almost to sine tones. All were extremely soft.

speaker 1



speaker 2



speaker 3

